



# ALLIANCE

ABHIMANYU

— Alliance City —  
DEVELOPERS REALTORS PVT. LTD.  
*building new beginnings!*

Mith Chowky, Malad West

Maha RERA : P51800052607





---

**Alliance City**  
DEVELOPERS REALTORS PVT. LTD.  
*building new beginnings!*

---

“

---

*With a name that symbolizes  
bravery and ambition, this project  
is more than just a structure; it's a  
source of inspiration for all who  
enter its doors.*

---

”



Artists Impression of Alliance Abhimanyu



---

### **Alliance Abhimanyu**

*invites residents and visitors alike to embark on their own heroic journeys, tackling life's challenges with resilience and confidence.*

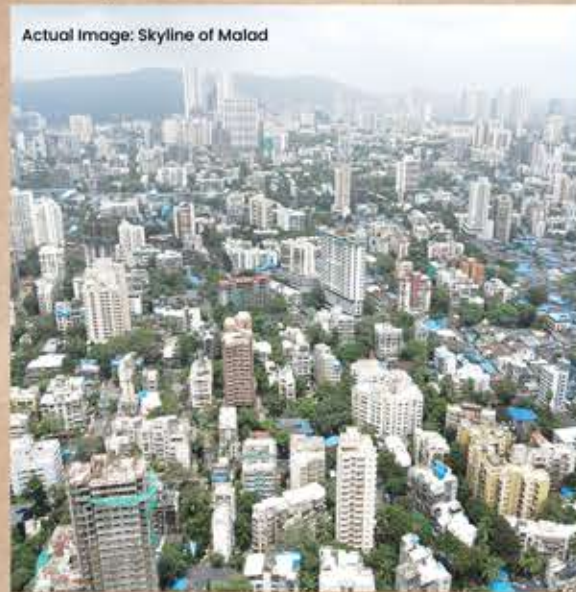
#### **What is Abhimanyu?**



The Padmavyūha (Sanskrit) or Chakravyūha is a military formation used to surround enemies, depicted in the Hindu epic Mahabharata. It resembles a labyrinth of multiple defensive walls.

---





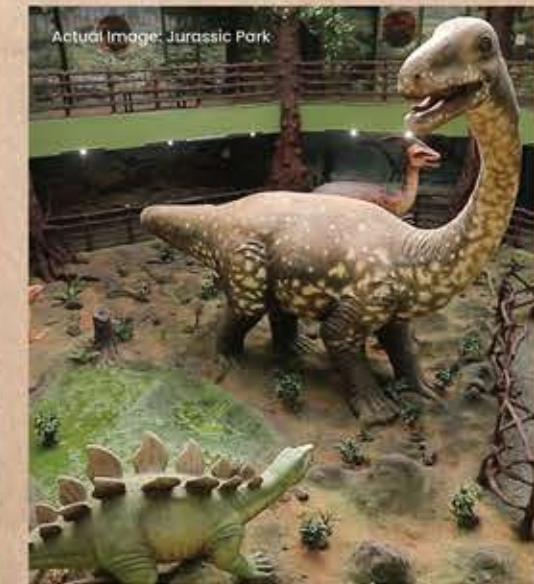
## *A Vibrant Suburb of Mumbai*

Malad is strategically situated along the coastline of the Arabian Sea, offering stunning views and easy access to the beach. It is divided into two parts: Malad East and Malad West, each with its own distinct character.

With the NEW BKC like enclave coming soon in Malad & work started on The Versova Bandra Sea Link, Malad has become one of the most sought after places to reside in the city.

*It is a place where tradition meets modernity, and where history blends seamlessly with the present.*

The suburb offers a wide range of housing options, from affordable apartments to luxurious high-rise towers. Its proximity to both the business districts of Bandra-Kurla Complex and the commercial areas of Andheri make it a favored residential destination for working professionals.





## Connectivity

1. Mithchowki Metro Station	300 m
2. New Link Rd	190 m
3. Malad Station	2.3 Km
4. Western Express Highway	3.7 Km
5. Malad Metro Station	1.7 Km

## Colleges

1. Atharva College	700 m
2. Oxford English School	2.5 Km
3. BMC College	850 m
4. Prakash College	2.4 Km
5. NI College	2.2 Km
6. Nagindas Khandwala College	1.8 Km

## Hospitals

1. Zenith Hospital	230 m
2. Vinayak maternity hospital	240 m
3. Raksha Multispeciality Hospital	505 m
4. The Children's Hospital Mumbai	700 m
5. Gosalia Hospital	400 m

## Schools

1. Mother Teresa High School	1.8 km
2. Ryan International School	900 m
3. Thakur International school	1.3 km
4. Shri Balaji International School	950 m
5. Holy mother english high school	1.6 Km

## Entertainment

1. Movie time cinema	900 m
2. Infiniti Mall Malad	1.4 Km
3. Decathlon Sports	1.2 Km
4. Goregaon Sports Club	1.8 Km
5. PVR Cinemas	1.9 Km
6. Jurassic Park	1.9 Km
7. Essel World	30 Km

## Recreation

1. Marve Beach	5.0 Km
2. Madh Island	10 Km
3. Dana Pani Beach	7.5 Km
4. Global Vipassana Pagoda	30 Km

Malad is dotted with beaches, serves as a jetty spot to getaway to Manori Island, and has a Goan neighbourhood Orlem where you'll find authentic Goan food away from Goa. And, let's not forget the endless eateries that Malad boasts of.







Artists Impression of Alliance Abhimanyu

---

Architecturally, it marries the time-honored elements of Indian aesthetics with contemporary design principles. As you gaze upon Abhimanyu, you'll see a building that stands tall and proud, reflecting the enduring spirit of its namesake.

The exterior design of Abhimanyu is a true masterpiece, a seamless fusion of classic elegance and contemporary sophistication. From the moment you set eyes on the building, you'll be captivated by its timeless charm and modern allure.

---





---

Alliance Abhimayu's amenities are designed to cater to diverse lifestyles, offering a harmonious blend of relaxation, recreation, and well-being.

This community truly embodies the essence of modern living, where every day feels like a luxurious retreat.

---



### ***Apartment Amenities***

- Lavish 2 & 3 bedroom residences
- Designed with emphasis on natural lighting and ample cross-ventilation
- Grand 10ft floor-to-floor height
- Designer High quality vitrified flooring adorning the living, dining and bedroom area

### ***Living Room Amenities***

- Smart Design to ensure a clean and cozy atmosphere
- Dedicated Dining Area for those cozy dinners with the family
- Intercom and Video Door Phones facility
- Full Height French Windows to ensure maximum sunlight and ventilation

### ***Kitchen Amenities***

- Granite-based, main & service platform, vitrified flooring and dado
- Scratch-resistant stainless steel bowl sink & drain board
- Provision for water purifier
- Hot & cold water mixer in wash basins

### ***Washroom Amenities***

- Designer High quality vitrified anti-skid flooring in all bathrooms
- Designer tile dado up to door height in bathrooms
- Rain shower in master bathroom
- Premium international sanitaryware and bath fitments
- Naturally ventilated bathrooms complemented with exhaust fan
- Hot & cold water mixer in wash basins





Artists Impression of Gym  
at Alliance Abhimanyu

---

The gym is more than just a place to break a sweat; it's a community of like-minded individuals striving for a healthier lifestyle.

With a welcoming atmosphere and a commitment to cleanliness and hygiene, you can work out with confidence and peace of mind.

---



## *Tower Amenities*

- Meticulously designed multi-storey tower
- Double-Height entrance lobby
- Spacious premium-finished floor lift lobby
- 2 High speed elevators
- Podium Parking
- Energy efficient LED lighting at designated common areas
- Rainwater harvesting to recharge ground water table
- Power backup for elevator & key utility areas
- Fully equipped international standard gymnasium
- Designer landscaped sky garden
- Spacious reception lounge
- Seating plaza on the terrace garden
- Dedicated kids' play area
- Aerobics and Yoga Deck
- 24-hour CCTV surveillance





# 2 BHK Option 1: 600 Sq Ft



2BHK	SQ.FT.
LIVING ROOM	10'-0" X 15'-1"
DINING	4'-2" X 6'-7"
KITCHEN	7'-1" X 8'-2"
C. TOILET	7'-7" X 4'-5"
BEDROOM - 1	11'-0" X 10'-0"
M. BEDROOM - 2	11'-0" X 10'-6"
M. TOILET - 2	4'-5" X 7'-1"
PASSAGE	8'-4" X 2'-11"
VESTIBULE	4'-11" X 2'-11"



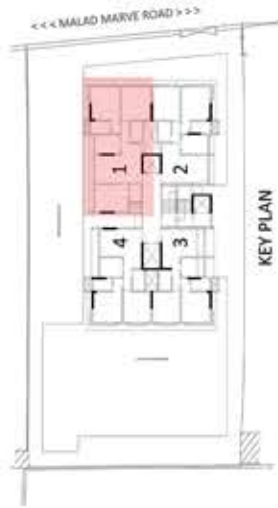








# 3 BHK Option 1: 685 Sq Ft



3BHK	SQ.FT.
LIVING ROOM	10'-0" X 14'-5"
DINING	4'-5" X 7'-5"
KITCHEN	7'-1" X 7'-1"
C. TOILET	7'-7" X 4'-5"
BEDROOM - 1	9'-0" X 10'-11"
M. BEDROOM - 2	9'-0" X 10'-8"
M. TOILET - 2	4'-5" X 7'-1"
M. BEDROOM - 3	10'-0" X 9'-6"
M. TOILET - 3	6'-5" X 4'-5"
VESTIBULE	4'-11" X 3'-1"
PASSAGE	8'-0" X 2'-11"



# 3 BHK Option 2: 821 Sq Ft



3BHK	SQ.FT.
LIVING ROOM	10'-0" X 16'-11"
DINING	4'-5" X 7'-5"
KITCHEN	7'-1" X 9'-0"
C. TOILET	7'-7" X 4'-5"
BEDROOM - 1	12'-0" X 10'-10"
M. BEDROOM - 2	12'-0" X 10'-8"
M. TOILET - 2	4'-5" X 7'-1"
M. BEDROOM - 3	10'-0" X 12'-0"
M. TOILET - 3	5'-6" X 4'-5"
VESTIBULE	4'-11" X 3'-1"
PASSAGE	8'-0" X 2'-11"



---

## Why Alliance City?

Alliance City with a vision to help build the most valuable property in Mumbai City makes its presence in residential, redevelopment & retail spaces. Our offerings allow individuals to upgrade their lifestyle with best in class construction quality and amenities.

---





— — — — —  
**Alliance City**  
DEVELOPERS REALTORS PVT. LTD.  
*building new beginnings!*  
— — — — —

***Alliance Sudeep***  
Mulund East-Mumbai  
**FULL OC RECEIVED**



***Alliance Mandarpushpa***  
Mulund East-Mumbai  
**FULL OC RECEIVED**

***Alliance Ravi Kiran***  
Mulund East-Mumbai  
**FULL OC RECEIVED**







*Amardeep Alliance*  
Mulund West-Mumbai  
**FULL OC RECEIVED**



*Alliance Bhaskar*  
Malad West-Mumbai  
**FULL OC RECEIVED**



*Alliance Mathuresh*  
Mulund West-Mumbai  
**FULL OC RECEIVED**

*Alliance Ruia*  
Malad West-Mumbai  
**FULL OC RECEIVED**







*Swati Sadan Alliance*  
Mulund East-Mumbai  
**FULL OC RECEIVED**



*Alliance Legacy*  
Matunga-Mumbai  
**ON GOING**



*Nirmal Milan*  
Vile Parle West-Mumbai  
**FULL OC RECEIVED**

*Alliance Saawai*  
Malad West-Mumbai  
**FULL OC RECEIVED**





## Connect With Us

Alliance Abhimanyu: Vishal Nagar, Mith Chowky,  
Marve Road, Malad (West) – 400 064

[www.alliancecity.co.in/alliance-abhimanyu](http://www.alliancecity.co.in/alliance-abhimanyu)

+919769131696 / +919820446285

[sales@alliancecity.co.in](mailto:sales@alliancecity.co.in)

## Corporate Office

Alliance City Developers Realtors Pvt Ltd  
Office No.401 A, 4th Floor, K.K. Chambers,  
Purushottamdas Thakurdas Road, Near  
Siddharth College, Fort Mumbai - 400001

[www.alliancecity.co.in](http://www.alliancecity.co.in)

[facebook.com/alliancecity](https://www.facebook.com/alliancecity)

[instagram.com/alliancecity](https://www.instagram.com/alliancecity)

## Disclaimer

Specifications and amenities mentioned in this brochure / advertisement and promotional documents are only representational and informative. Information, images, visuals, drawings plans or sketches shown in this promotional document is / are indicative of the envisaged development and the same are subject to approvals.

Maps may not be to scale and distances and travel times are as available on Google Maps.

All dimensions mentioned in the drawings may vary / differ due to construction contingencies, construction variances, site conditions and changes required by regulatory authorities. All layouts, plans, specifications, dimensions, designs, measurements and locations are indicative and not to scale and are subject to change as may be decided by the company or competent authority. Revision, alteration, modification, addition, deletion, substitution or recast, if any, may be necessary during construction.

\*The images of the flat shown are rendered images of the flat. The views depicted in the pictures are as presently available from some specific flats and they may vary over period of time for reasons beyond the control of the Promoter. The view/s may not be available from all the flats in the Project and customers will need to apprise themselves on the views available from the flat/apartment of your choice.

The rendered images of the proposed Residential Flat are of a specific configuration showcasing the interior layout and is prepared with furniture, items, electronic goods, amenities and other furnishings for the purpose of showcasing the proposed residential unit. It is for representation purpose only. The Promoter/ developer shall not be required to provide any furniture, items, goods, amenities etc as displayed in the picture/s. All plans, specifications, dimensions, designs, measurements of the flat are indicative and are subject to changes. The dream flat / show flat is of a specific configuration only. Actual configurations for sale may vary. Customers are requested to apprise themselves of the details for the configuration of their choice.

The amenities shown herein are only Indicative and they are subject to change/s based on approval from competent authorities.

All Intending Allottee/s are bound to inspect and apprise themselves of all plans and approvals and other relevant information prior to making any purchase decisions and nothing in this promotional document or other documents is intended to substitute the actual plans and approvals obtained from time to time.

The relationship between the Developer and the actual customers will be governed strictly by the agreements to be executed from time to time and not on the terms of this brochure/advertisement or other promotional document. This brochure is not a legal document and we reserve the right to change, amend and modify the contents and shall not be liable to any intending Purchaser or any one for the changes/ alterations/ improvements so made.



The project has been registered via MahaRERA registration number: P51800052607 and is available on the website <https://maharera.mahaonline.gov.in> under registered projects. Alliance Abhimanyu is developed by Alliance City Developers Realtors Pvt Ltd





Mith Chowky, Malad West

Maha RERA : P51800052607

---

🌐 [alliancecity.co.in/alliance-abhimanyu](http://alliancecity.co.in/alliance-abhimanyu)

☎ +91 9769131696/ +91 9820446285

✉ [sales@alliancecity.co.in](mailto:sales@alliancecity.co.in)